



Legislative District Information After 2011 Reapportionment Senate District 30

House Districts: 39, 43, 44, 45

District Population: 143,277

County	Population	Percent
Douglas	143,277	100.00%

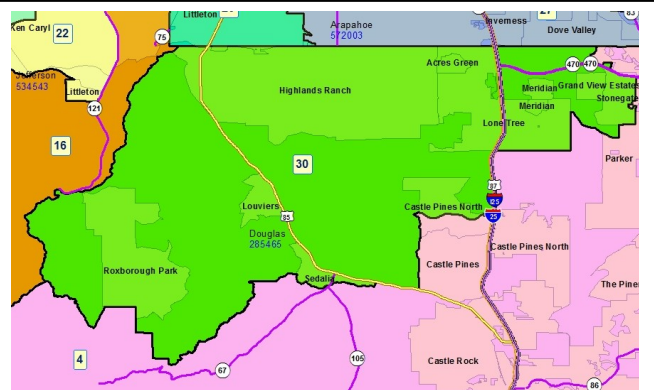
Registered Voters: 79,959

Party	Number	Percent
Republican	38,048	47.58%
Democratic	18,065	22.59%
Unaffiliated	23,450	29.33%
Minor Party	396	0.50%

Voting Age Population: 99,122

Population Demographics

Race/Ethnicity	Number	Percent
White-Non Hispanic	120,300	83.96%
Hispanic	10,386	7.25%
Black	2,352	1.64%
American Indian or Alaskan Native	847	0.59%
Asian	9,004	6.28%
Hawaiian or Pacific Islander	149	0.10%
Other	239	0.17%



2010 Election Results

Election	Party	Number	Percent
U.S. Senate	Republican	33,764	58.16%
	Democratic	22,073	38.02%
	Minor Party	2,217	3.82%
Governor	Republican	6,301	10.75%
	Democratic	25,636	43.73%
	Minor Party	26,692	45.53%
Treasurer	Republican	35,294	62.89%
	Democratic	20,822	37.11%

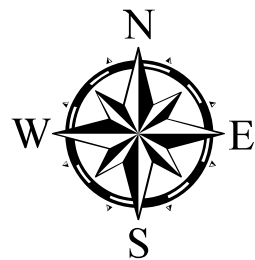
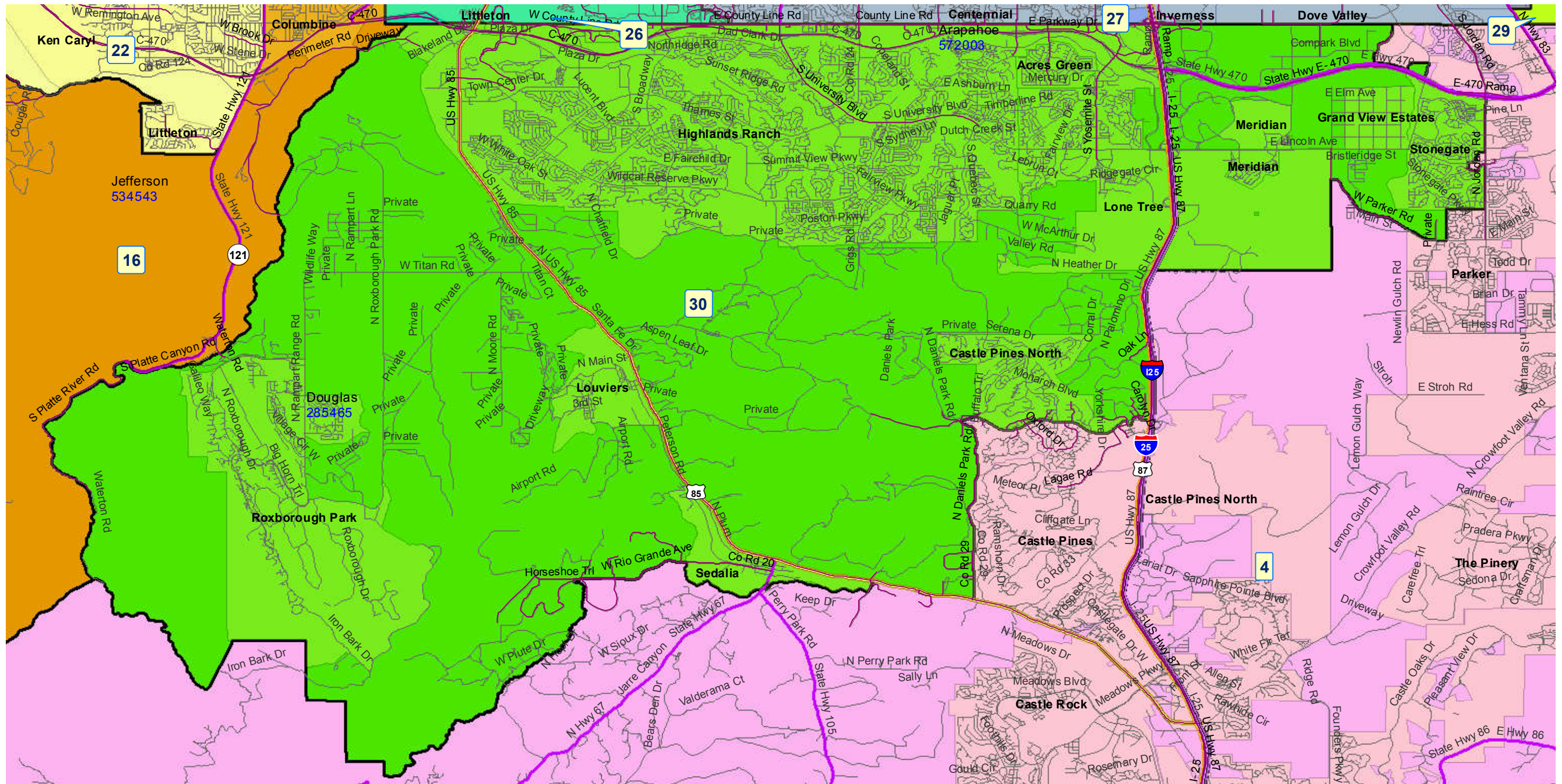
Communities within district

- Acres Green
- Castle Pines North
- Grand View Estates
- Highlands Ranch
- Littleton
- Lone Tree
- Louviers
- Meridian
- Roxborough Park
- Sedalia
- Stonegate

School Districts within district

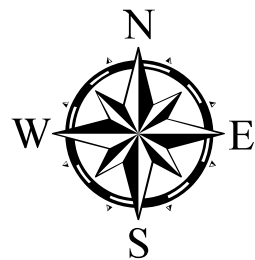
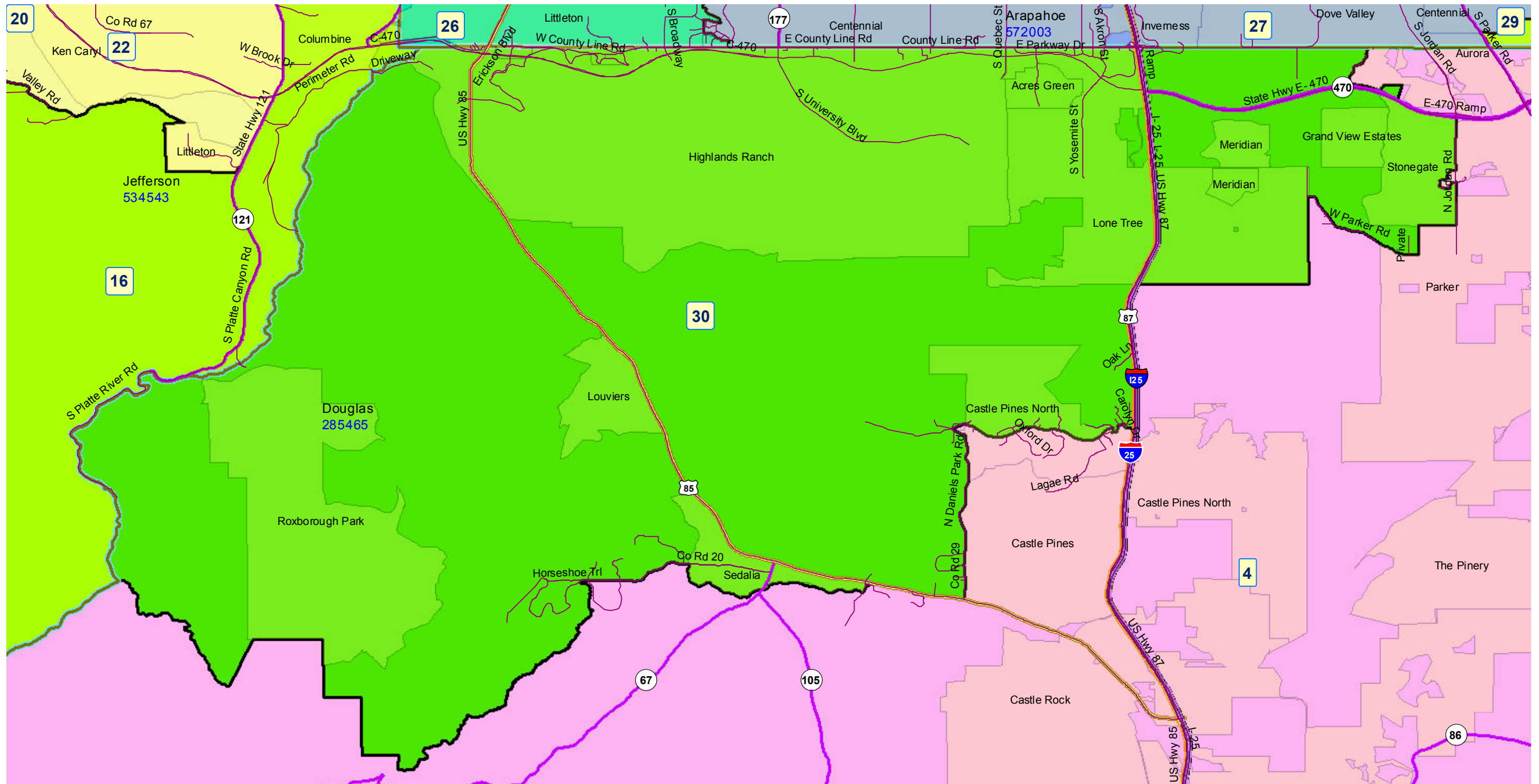
- Cherry Creek 5
- Douglas County RE 1
- Jefferson County R-1
- Littleton 6

Senate District 30 After 2011 Reapportionment



Prepared by Reapportionment Commission Staff
December 2011

Senate District 30 After 2011 Reapportionment



Prepared by Reapportionment Commission Staff
December 2011