



# Legislative District Information After 2011 Reapportionment House District 61

**Senate Districts: 5, 8**

**District Population: 79,176**

County	Population	Percent
Summit County	27,994	35%
Delta County	19,436	25%
Pitkin County	17,148	22%
Lake County	7,310	9%
Gunnison County	7,288	9%

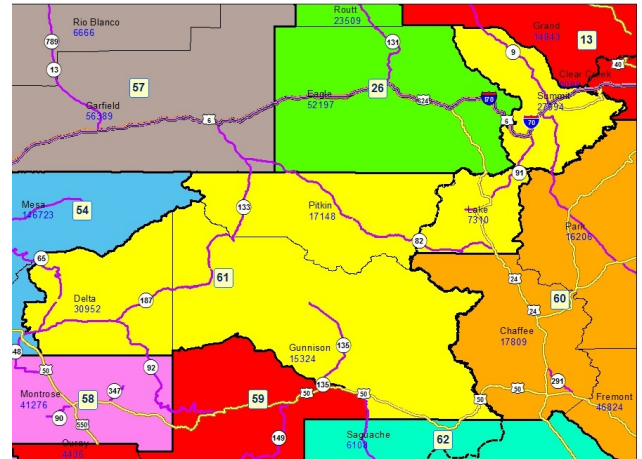
**Registered Voters: 46,509**

Party	Number	Percent
Republican	13,511	29.05%
Democratic	14,775	31.77%
Unaffiliated	17,777	38.22%
Minor Party	446	0.96%

**Voting Age Population: 64,056**

### Population Demographics

Race/Ethnicity	Number	Percent
White-Non Hispanic	66,553	84.06%
Hispanic	10,392	13.13%
Black	533	0.67%
American Indian or Alaskan Native	594	0.75%
Asian	897	1.13%
Hawaiian or Pacific Islander	80	0.10%
Other	127	0.16%



### 2010 Election Results

Election	Party	Number	Percent
U.S. Senate	Republican	12,992	41.00%
	Democratic	16,896	53.32%
	Minor Party	1,801	5.68%
Governor	Republican	4,676	14.68%
	Democratic	18,338	57.59%
	Minor Party	8,829	27.73%
Treasurer	Republican	14,273	47.33%
	Democratic	15,883	52.67%

### Communities within district

- Aspen
- Basalt
- Blue River
- Breckenridge
- Cedaredge
- Copper Mountain
- Crawford
- Crested Butte
- Dillon
- Frisco
- Heeney
- Hotchkiss
- Keystone

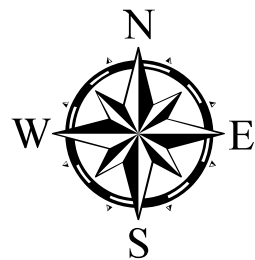
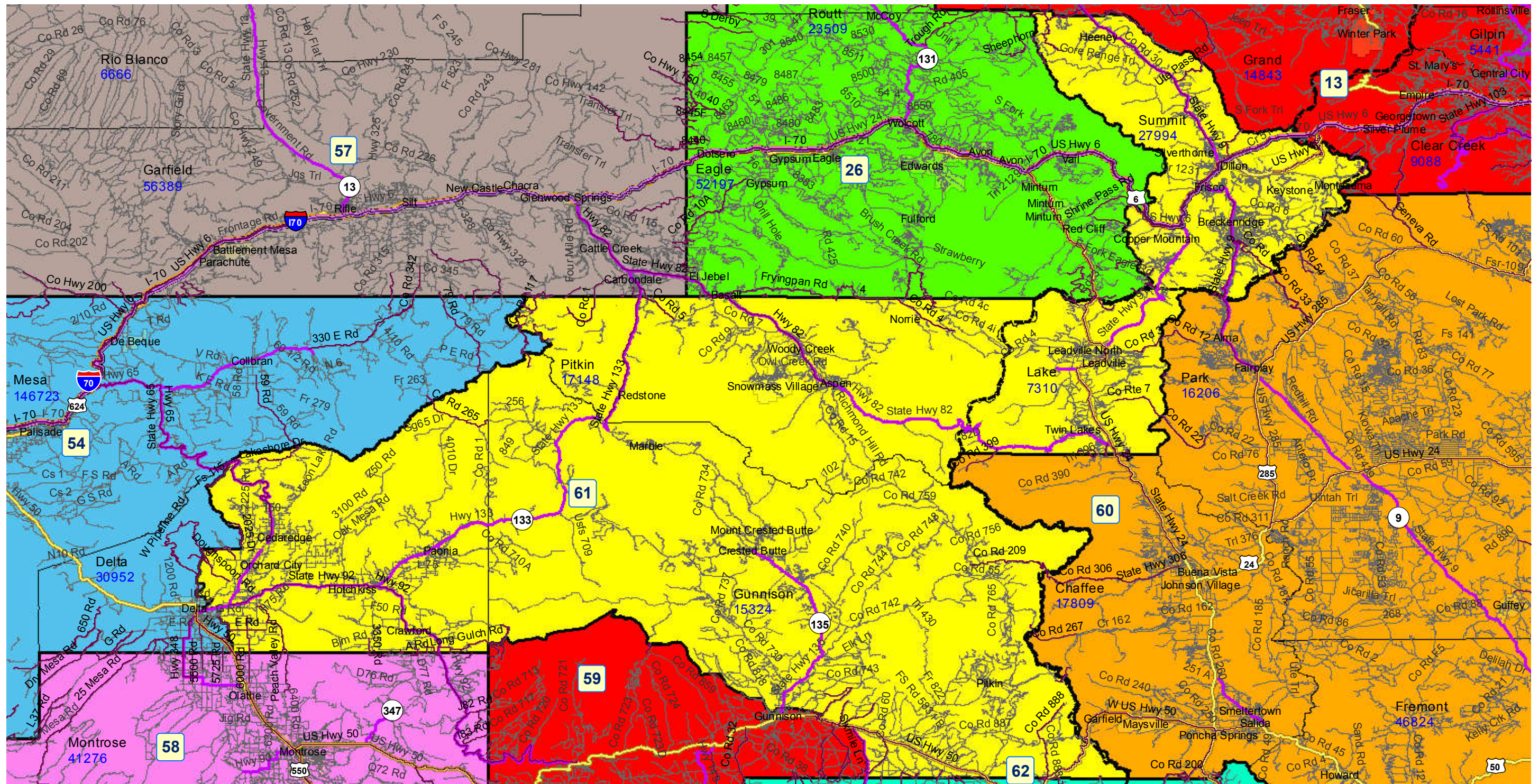
Leadville  
Leadville North  
Marble  
Montezuma  
Mount Crested Butte  
Norrie  
Orchard City  
Paonia  
Pitkin  
Redstone  
Silverthorne  
Snowmass Village  
Twin Lakes  
Woody Creek

***School Districts within district***

---

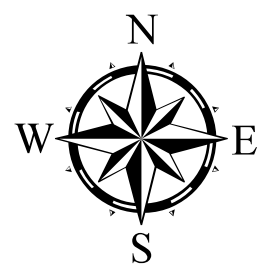
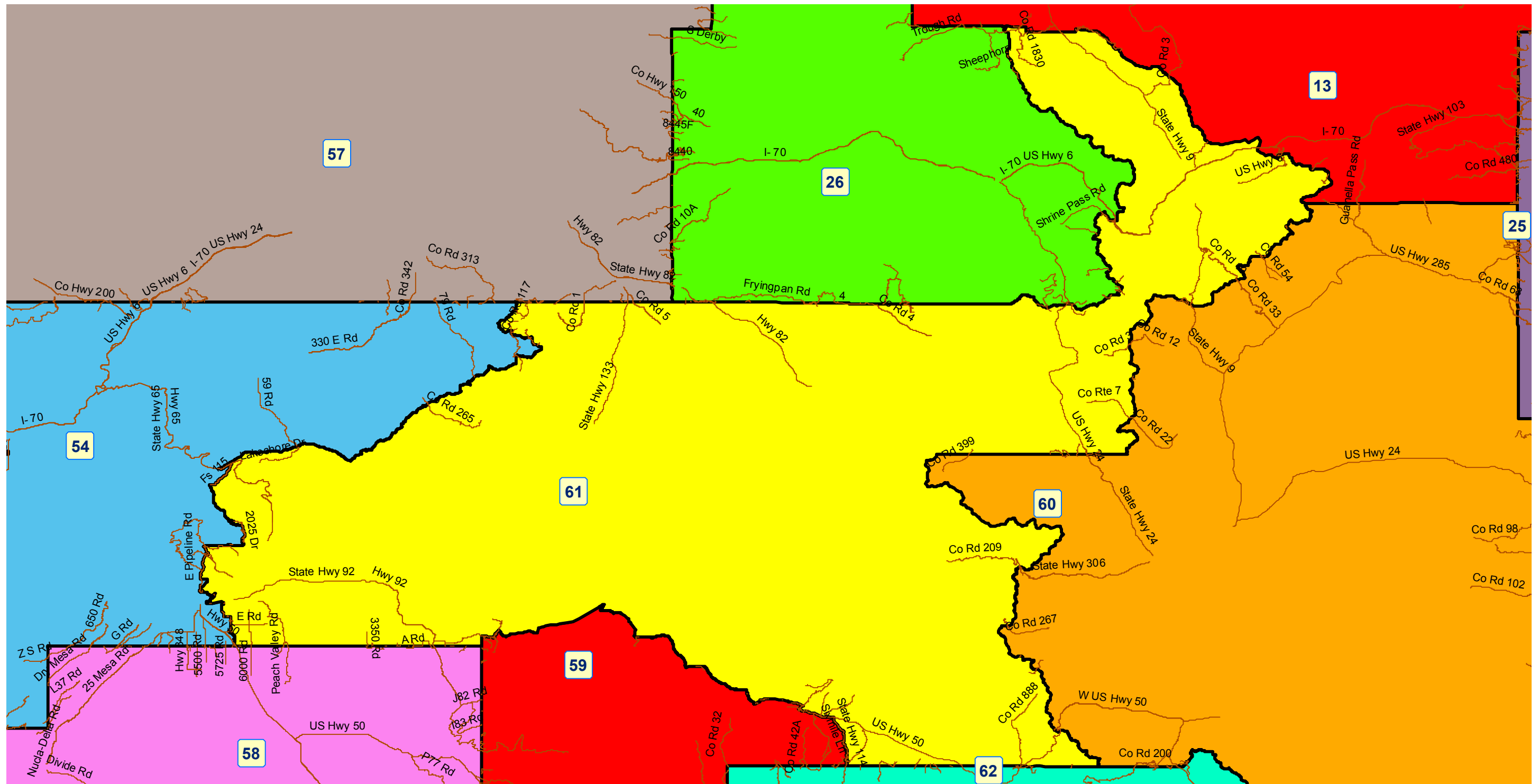
Aspen 1  
Buena Vista R-31  
Clear Creek RE-1  
Delta County 50(J)  
Eagle County RE 50  
Gunnison Watershed RE1J  
Lake County R-1  
Montrose County RE-1J  
Park County RE-2  
Plateau Valley 50  
Platte Canyon 1  
Roaring Fork RE-1  
Salida R-32  
Summit RE-1  
West Grand 1-JT

# House District 61 After 2011 Reapportionment



Prepared by Reapportionment Commission Staff  
December 2011

# House District 61 After 2011 Reapportionment



Prepared by Reapportionment Commission Staff  
December 2011