



Legislative District Information

After 2011 Reapportionment

House District 60

Senate Districts: 2, 5, 35

District Population: 79,302

County	Population	Percent
Fremont County	41,032	52%
Chaffee County	17,809	22%
Park County	16,206	20%
Custer County	4,255	5%

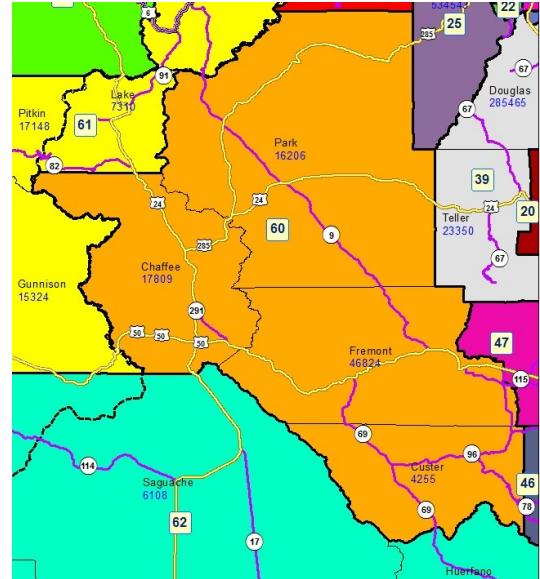
Registered Voters: 41,132

Party	Number	Percent
Republican	18,662	45.37%
Democratic	10,327	25.11%
Unaffiliated	11,805	28.70%
Minor Party	338	0.82%

Voting Age Population: 65,500

Population Demographics

Race/Ethnicity	Number	Percent
White-Non Hispanic	66,695	84.10%
Hispanic	7,960	10.04%
Black	2,356	2.97%
American Indian or Alaskan Native	1,500	1.89%
Asian	671	0.85%
Hawaiian or Pacific Islander	40	0.05%
Other	80	0.10%



2010 Election Results

Election	Party	Number	Percent
U.S. Senate	Republican	17,252	54.51%
	Democratic	11,991	37.89%
	Minor Party	2,405	7.60%
Governor	Republican	5,536	17.31%
	Democratic	13,232	41.37%
	Minor Party	13,217	41.32%
Treasurer	Republican	18,312	59.39%
	Democratic	12,521	40.61%

Communities within district

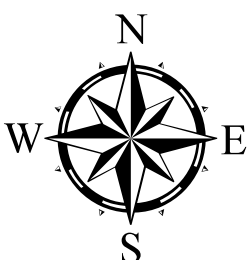
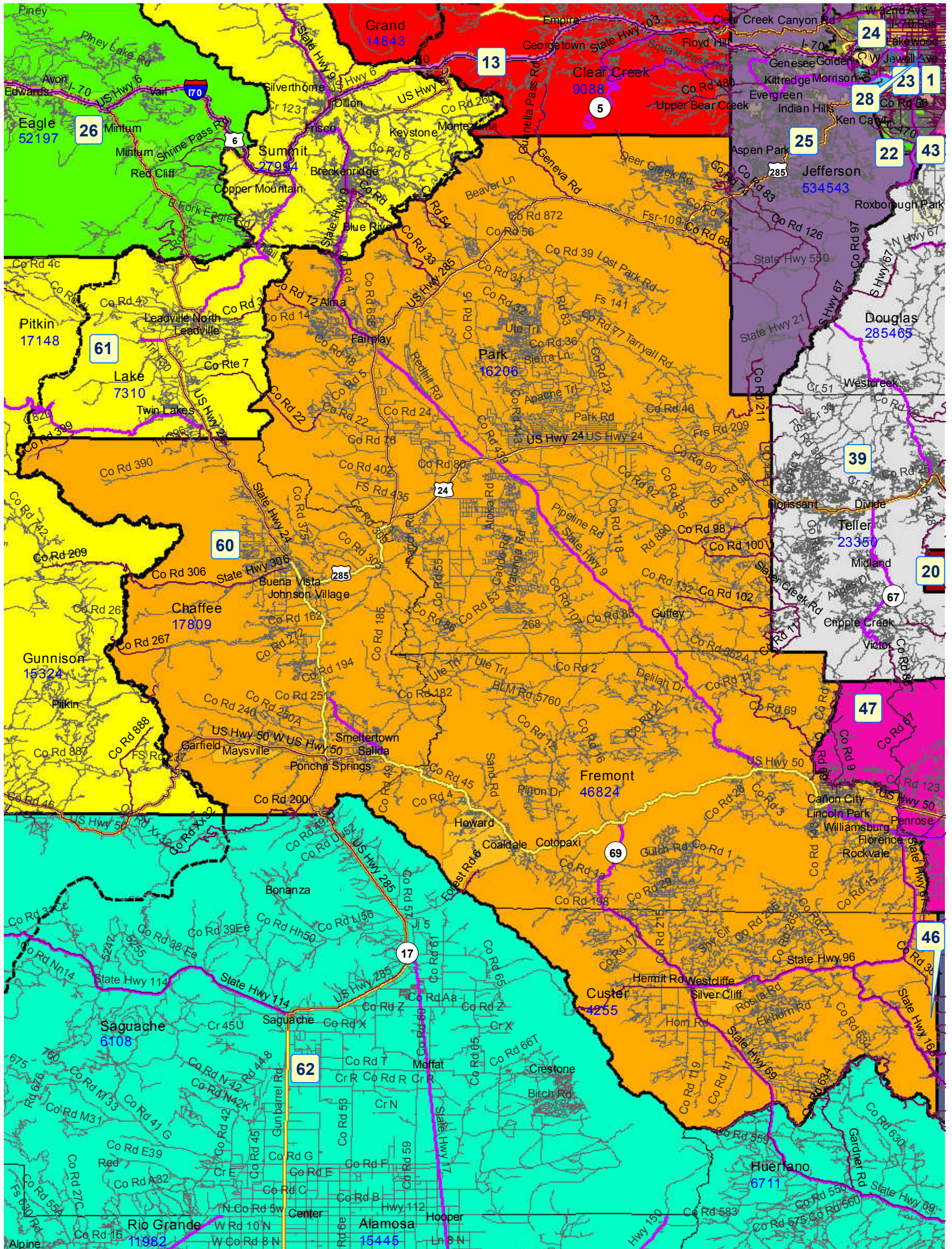
- Alma
- Brookside
- Buena Vista
- Canon City
- Coal Creek
- Coaldale
- Cotopaxi
- Fairplay
- Florence
- Garfield

Guffey
Howard
Johnson Village
Lincoln Park
Maysville
Poncha Springs
Rockvale
Salida
Silver Cliff
Smelertown
Westcliffe
Williamsburg

School Districts within district

Buena Vista R-31
Canon City RE-1
Clear Creek RE-1
Cotopaxi RE-3
Cripple Creek-Victor RE-1
Custer County C-1
Florence RE-2
Gunnison Watershed RE1J
Huerfano RE-1
Jefferson County R-1
Lake County R-1
Moffat 2
Mountain Valley RE 1
Park County RE-2
Platte Canyon 1
Pueblo County Rural 70
Salida R-32
Summit RE-1
Woodland Park RE-2

House District 60 After 2011 Reapportionment



House District 60 After 2011 Reapportionment

