



Legislative District Information After 2011 Reapportionment Senate District 9

House Districts: 14, 15, 18, 19, 20

District Population: 145,975

County	Population	Percent
El Paso County	145,975	100%

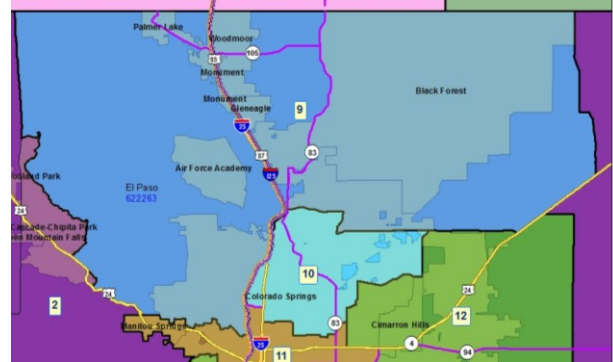
Registered Voters: 82,539

Party	Number	Percent
Republican	46,340	56.14%
Democratic	13,036	15.79%
Unaffiliated	22,754	27.57%
Minor Party	409	0.50%

Voting Age Population: 105,840

Population Demographics

Race/Ethnicity	Number	Percent
White-Non Hispanic	122,005	83.58%
Hispanic	11,222	7.69%
Black	4,383	3.00%
American Indian or Alaskan Native	1,459	1.00%
Asian	6,301	4.32%
Hawaiian or Pacific Islander	268	0.18%
Other	337	0.23%



2010 Election Results

Election	Party	Number	Percent
U.S. Senate	Republican	41,276	68.78%
	Democratic	16,372	27.28%
	Minor Party	2,363	3.94%
Governor	Republican	11,050	18.38%
	Democratic	18,771	31.22%
	Minor Party	30,306	50.40%
Treasurer	Republican	41,438	71.41%
	Democratic	16,587	28.59%

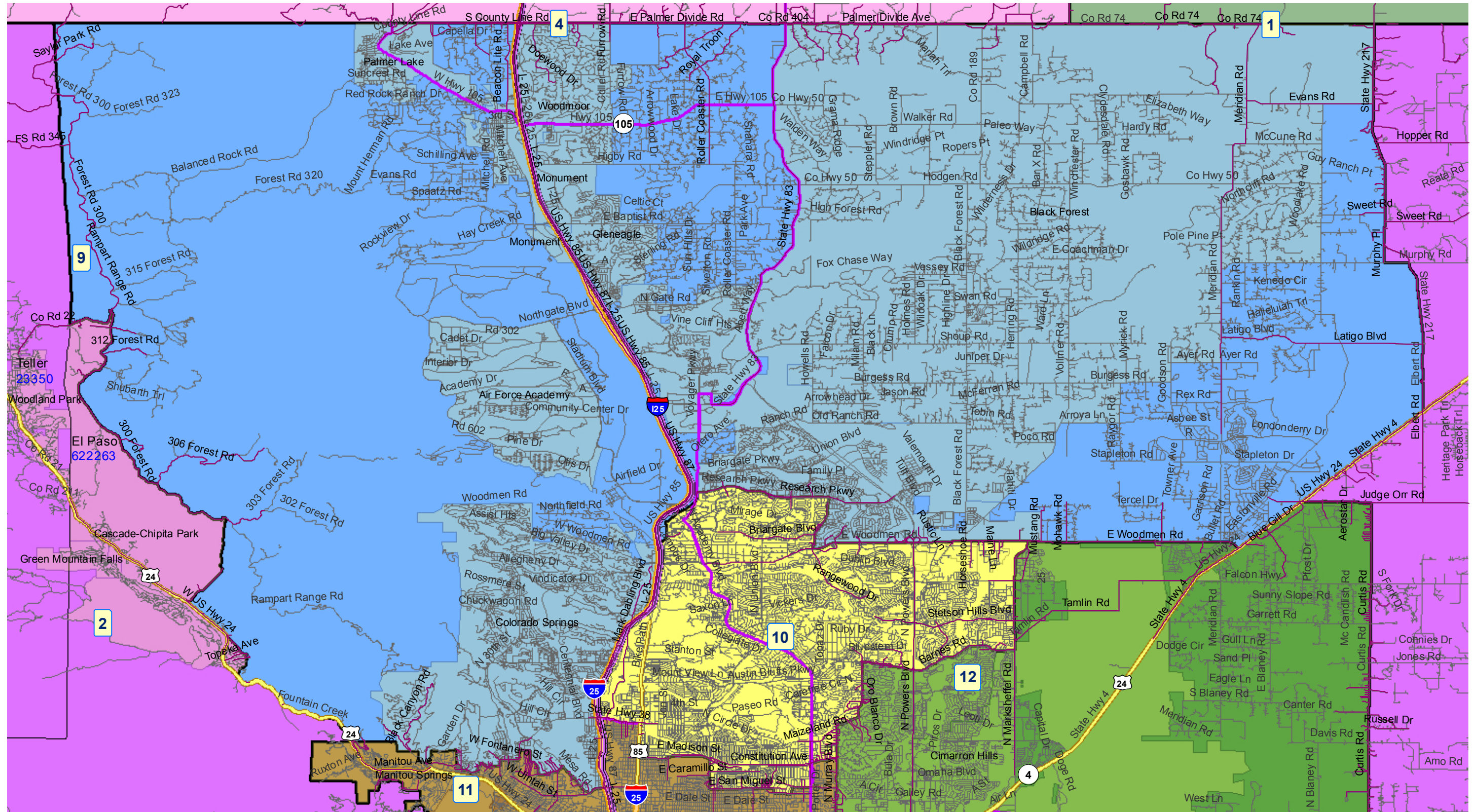
Communities within district

- Air Force Academy
- Black Forest
- Colorado Springs
- Gleneagle
- Monument
- Palmer Lake
- Woodmoor

School Districts within district

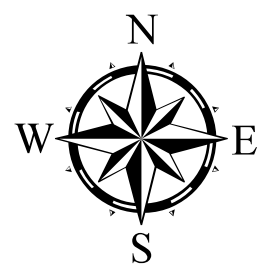
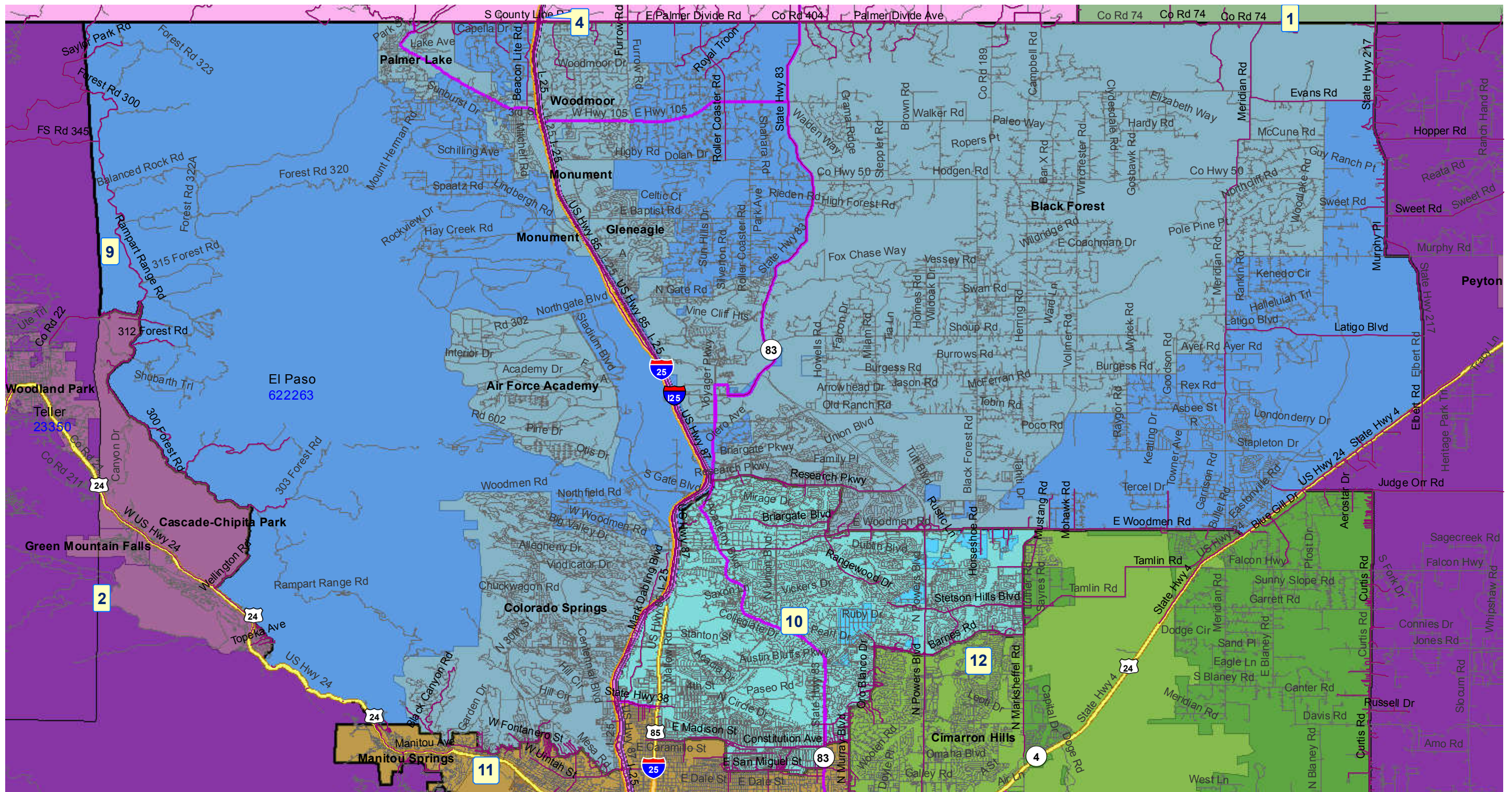
- Academy 20
- Colorado Springs 11
- Douglas County RE 1
- Elbert 200
- Falcon 49
- Lewis-Palmer 38
- Manitou Springs 14
- Peyton 23 JT
- Woodland Park RE-2

Senate District 9 After 2011 Reapportionment



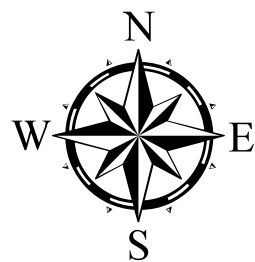
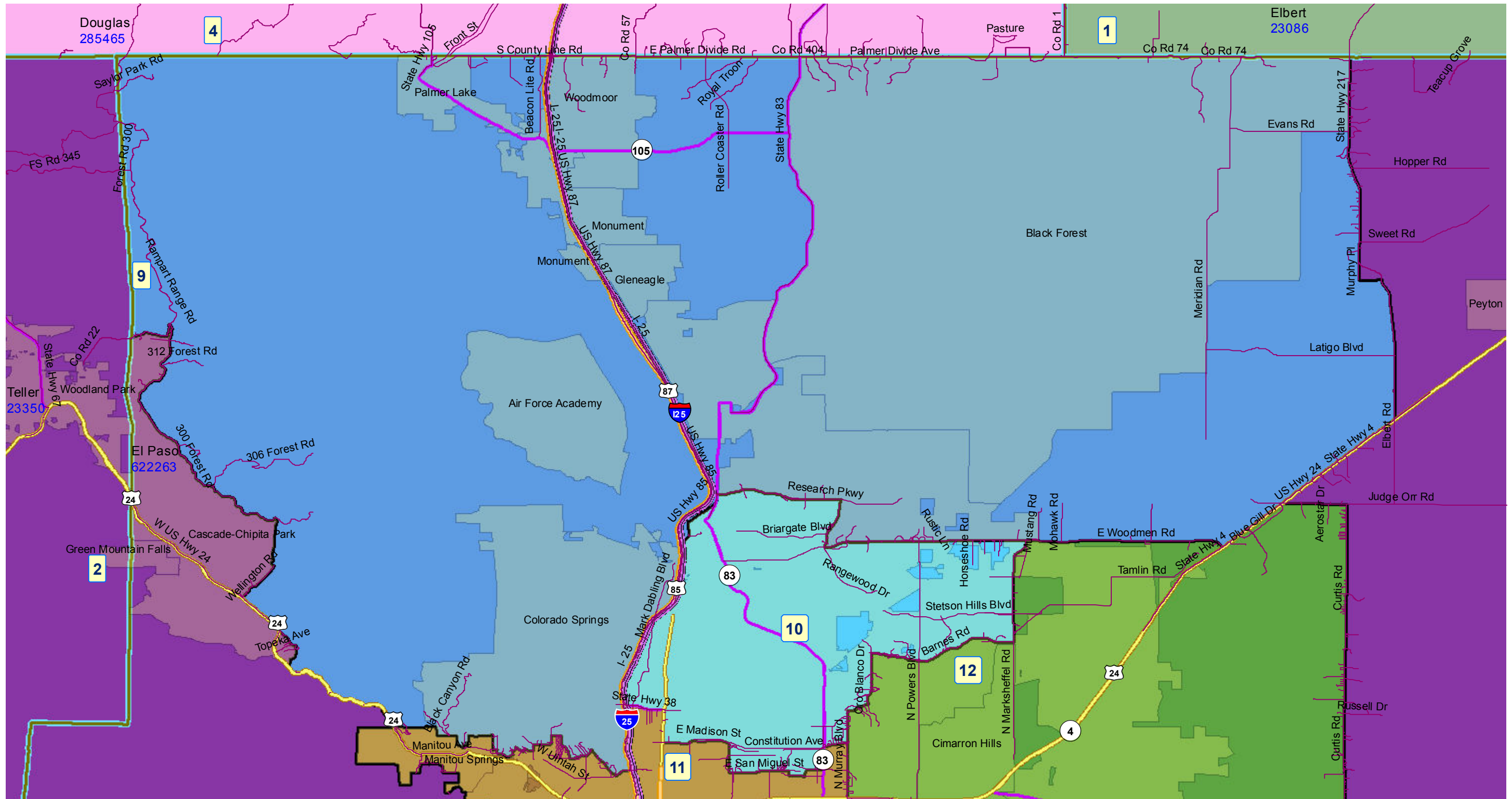
Prepared by Reapportionment Commission Staff
December 2011

Senate District 9 After 2011 Reapportionment



Prepared by Reapportionment Commission Staff
December 2011

Senate District 9 After 2011 Reapportionment



Prepared by Reapportionment Commission Staff
December 2011