



Legislative District Information

After 2011 Reapportionment

House District 49

Senate Districts: 13, 14, 15, 23

District Population: 79,079

County	Population	Percent
Larimer County	62,379	79%
Weld County	16,700	21%

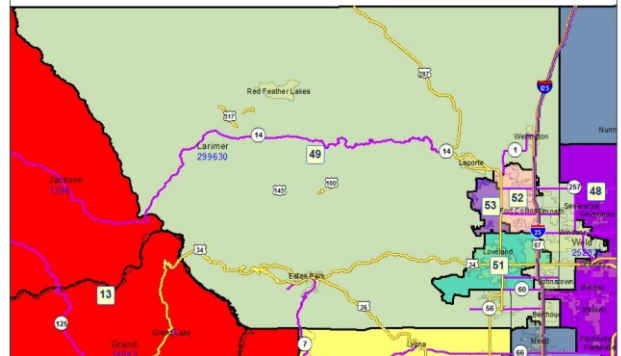
Registered Voters: 48,903

Party	Number	Percent
Republican	20,802	42.54%
Democratic	11,782	24.09%
Unaffiliated	15,998	32.71%
Minor Party	321	0.66%

Voting Age Population: 60,992

Population Demographics

Race/Ethnicity	Number	Percent
White-Non Hispanic	70,028	88.55%
Hispanic	6,548	8.28%
Black	550	0.70%
American Indian or Alaskan Native	747	0.94%
Asian	1,044	1.32%
Hawaiian or Pacific Islander	57	0.07%
Other	105	0.13%



2010 Election Results

Election	Party	Number	Percent
U.S. Senate	Republican	20,420	54.23%
	Democratic	15,130	40.18%
	Minor Party	2,108	5.60%
Governor	Republican	4,571	11.93%
	Democratic	16,714	43.63%
	Minor Party	17,020	44.43%
Treasurer	Republican	21,674	59.02%
	Democratic	15,048	40.98%

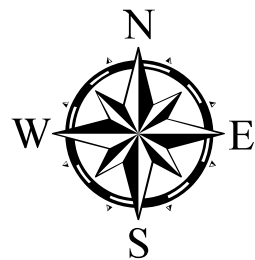
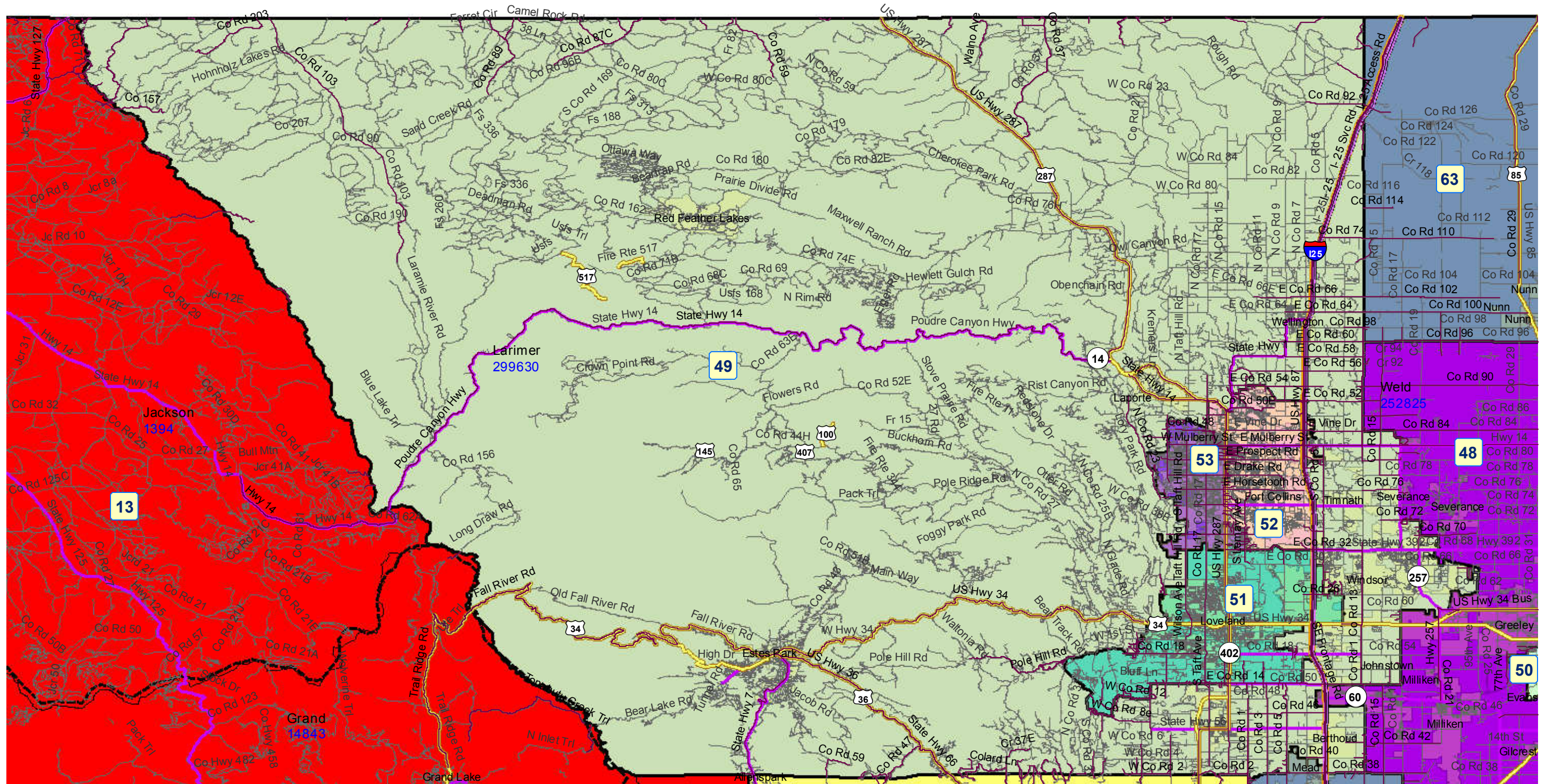
Communities within district

- Berthoud
- Estes Park
- Johnstown
- Laporte
- Red Feather Lakes
- Timnath
- Wellington
- Windsor

School Districts within district

Ault-Highland RE-9
East Grand 2
Johnstown-Milliken RE-5J
North Park R-1
Park (Estes Park) R-3
Poudre R-1
St Vrain Valley RE 1J
Thompson R-2J
Windsor RE-4

House District 49 After 2011 Reapportionment



Prepared by Reapportionment Commission Staff
December 2011

