



Legislative District Information

After 2011 Reapportionment

House District 39

Senate Districts: 2, 4, 30

District Population: 76,741

County	Population	Percent
Douglas County	53,391	70%
Teller County	23,350	30%

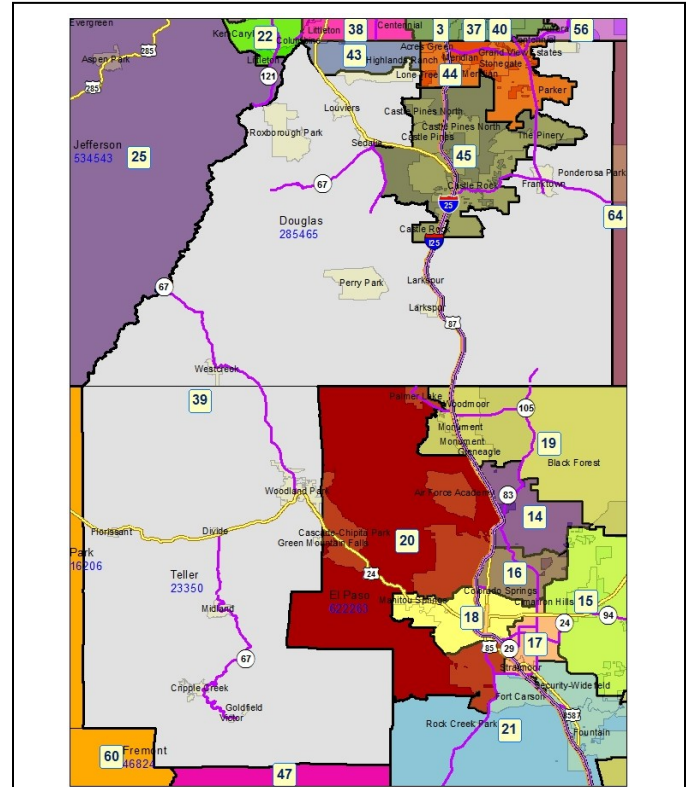
Registered Voters: 45,128

Party	Number	Percent
Republican	22,795	50.51%
Democratic	8,967	19.87%
Unaffiliated	13,077	28.98%
Minor Party	289	0.64%

Voting Age Population: 56,253

Population Demographics

Race/Ethnicity	Number	Percent
White-Non Hispanic	67,587	88.07%
Hispanic	4,501	5.87%
Black	805	1.05%
American Indian or Alaskan Native	729	0.95%
Asian	2,922	3.81%
Hawaiian or Pacific Islander	73	0.10%
Other	124	0.16%



2010 Election Results

Election	Party	Number	Percent
U.S. Senate	Republican	21,235	62.63%
	Democratic	11,092	32.71%
	Minor Party	1,578	4.65%
Governor	Republican	4,407	12.88%
	Democratic	12,404	36.25%
	Minor Party	17,407	50.87%
Treasurer	Republican	22,196	67.16%
	Democratic	10,855	32.84%

Communities within district

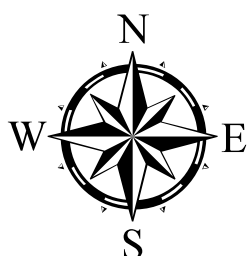
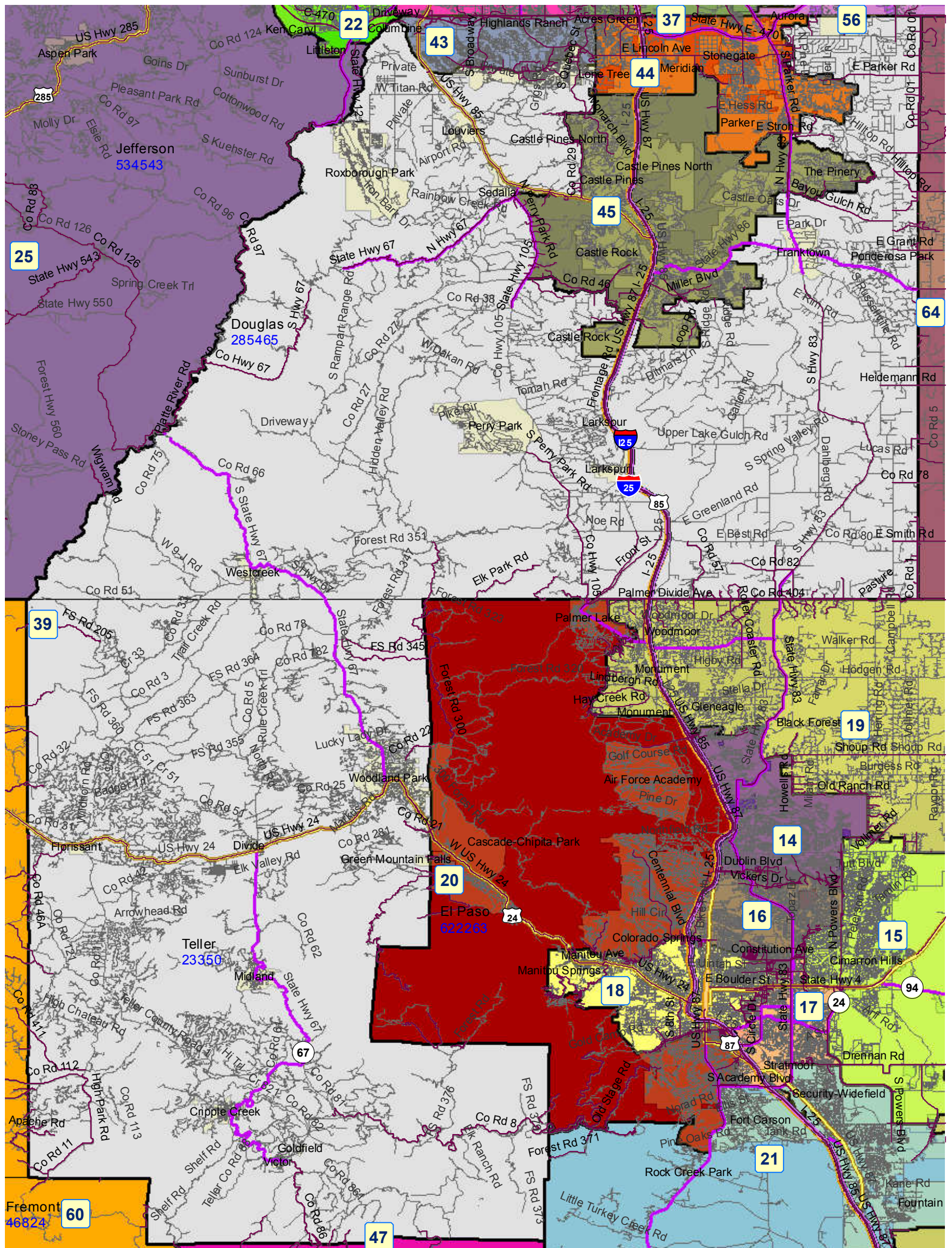
- Aurora
- Cripple Creek
- Divide
- Florissant
- Frantown

Goldfield
Green Mountain Falls
Highlands Ranch
Larkspur
Louviers
Midland
Perry Park
Roxborough Park
Sedalia
Victor
Westcreek
Woodland Park

School Districts within district

Canon City RE-1
Cherry Creek 5
Cheyenne Mountain 12
Cripple Creek-Victor RE-1
Douglas County RE 1
Elbert 200
Elizabeth C-1
Fountain 8
Jefferson County R-1
Lewis-Palmer 38
Manitou Springs 14
Park County RE-2
Woodland Park RE-2

House District 39 After 2011 Reapportionment



House District 39 After 2011 Reapportionment

