



Legislative District Information After 2011 Reapportionment House District 13

Senate Districts: 2, 8, 16, 18

District Population: 76,592

County	Population	Percent
Boulder County	45,826	60%
Grand County	14,843	19%
Clear Creek County	9,088	12%
Gilpin County	5,441	7%
Jackson County	1,394	2%

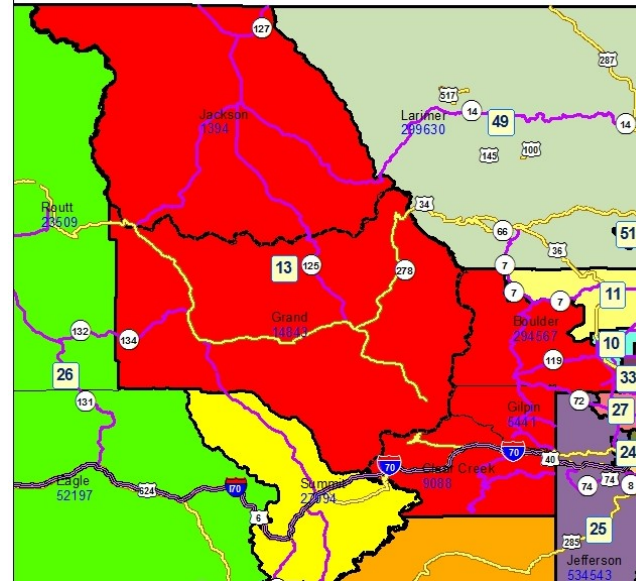
Registered Voters: 47,302

Party	Number	Percent
Republican	11,009	23.27%
Democratic	20,632	43.62%
Unaffiliated	15,129	31.98%
Minor Party	532	1.12%

Voting Age Population: 63,920

Population Demographics

Race/Ethnicity	Number	Percent
White-Non Hispanic	69,139	90.27%
Hispanic	3,967	5.18%
Black	618	0.81%
American Indian or Alaskan Native	682	0.89%
Asian	1,986	2.59%
Hawaiian or Pacific Islander	72	0.09%
Other	128	0.17%



2010 Election Results

Election	Party	Number	Percent
U.S. Senate	Republican	10,111	27.81%
	Democratic	24,528	67.45%
	Minor Party	1,723	4.74%
Governor	Republican	2,122	5.82%
	Democratic	25,568	70.10%
	Minor Party	8,783	24.08%
Treasurer	Republican	11,094	32.05%
	Democratic	23,524	67.95%

Communities within district

- Bark Ranch
- Black Hawk
- Bonanza Mountain
- Estates
- Boulder
- Central City
- Coal Creek
- Crisman
- Downieville-Lawson-Dumont

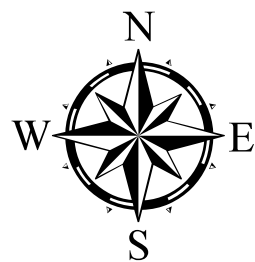
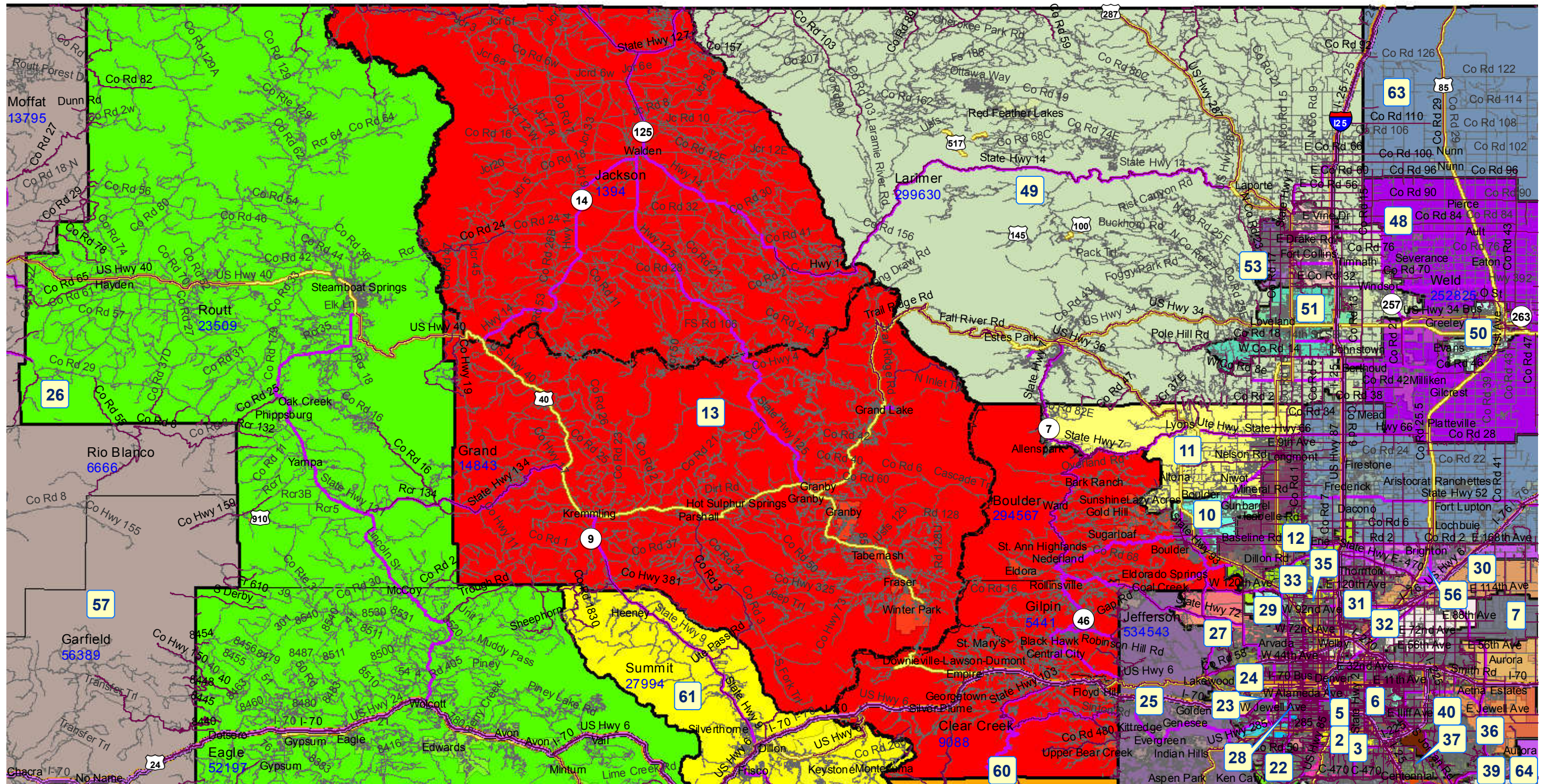
Eldora
Eldorado Springs
Empire
Floyd Hill
Fraser
Georgetown
Glendale
Gold Hill
Granby
Grand Lake
Hidden Lake
Hot Sulphur Springs
Idaho Springs
Jamestown
Kremmling
Mountain Meadows
Nederland
Parshall
Pine Brook Hill
Rollinsville
Seven Hills
Silver Plume
St. Ann Highlands
St. Mary's
Sugarloaf
Sunshine
Tabernash
Tall Timber
Upper Bear Creek
Walden
Ward
Winter Park

School Districts within district

Boulder Valley RE 2
Clear Creek RE-1
Eagle County RE 50
East Grand 2
Gilpin County RE-1
Jefferson County R-1
North Park R-1
Park (Estes Park) R-3
Platte Canyon 1
Poudre R-1
South Routt RE 3
St Vrain Valley RE 1J

Steamboat Sprgs RE-2
Summit RE-1
West Grand 1-JT

House District 13 After 2011 Reapportionment



Prepared by Reapportionment Commission Staff
December 2011

